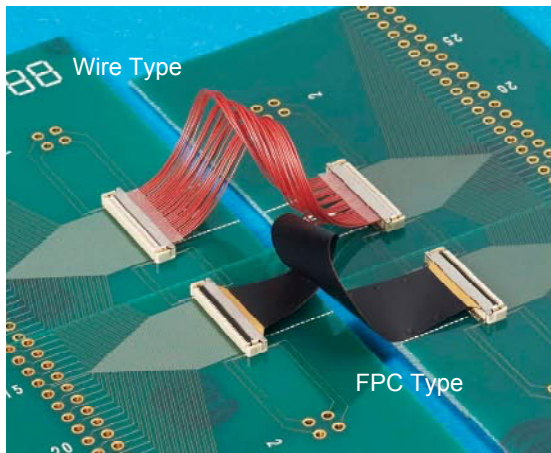
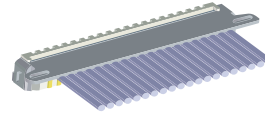


# Internal wiring – space saving fine connector [SFC series]

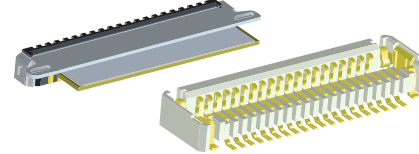
YOKOWA



Wire connecting type



FPC connecting type



Receptacle (Compatible to 2types)

## Application

- Connection for hinge area of Cellar phone, Digital camera, Handy video.  
(Meet the need for through the small hole parts)
- Interconnection for Note PC , PDA , Closed-circuit TV, etc.

## Feature

- World first 0.4mm pitch connector compatible  
(receptacle side on PCB (SMT) can be used in common )
- Low Profile / Space Saving  
With narrow contact pitch as 0.4mm, 1.5mm low profile is achieved and more than that, requiring No space for plug assembling space for its vertical insertion system.
- Hi Reliable Contacting Method  
Unique 2points contact structure keeps 0.6mm mating length and high mechanical performance like anti-vibration and insertion durability and moreover sensitive click assembly . is achieved.
- Super Miniaturized Plug Size  
Super miniaturized plug on cable side (FPC & Wire) has size □1.2 x 2mm which makes easy hinge shafts through assembly.
- Multi-Layer (Shielded) FPC compatible  
Solder less GND Connection achieved for the file clad FPC which is widely used for electromagnetic wave shielding.
- Hi-Flexible Fine Wire Connection available  
Solder less connection achieved for the fine wire AWG#38~#36 (Coating outer diameter: 0.24mm)

## Specification

Rated Voltage/Current	AC/DC 50V, 0.4A (AWG#38 0.3A)
Operational temp.	-25~+85°C (Incl.temp.increase during charge)
Contact Resistance	Less than 50mohoms (Excl. conductor resistance of FPC/Wire)
Insulation Resistance	DC100V/Over 100MΩ
Withstanding Voltage	AC100V for 1minute