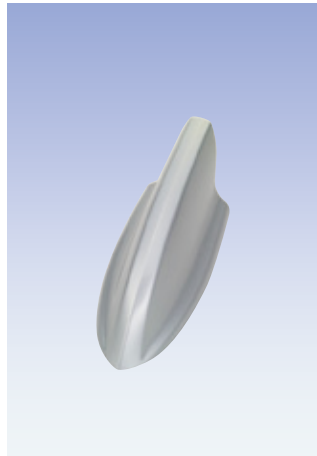


Shark Fin Antenna



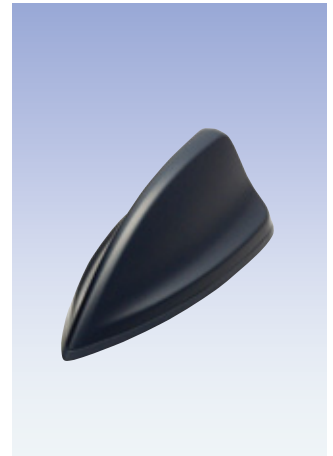
Shark Fin Antenna
(AM/FM)



Combined Shark Fin Antenna
(Tri Band)
(AM/FM/GPS or SDARS)



Combined Shark Fin Antenna
(Quad Band)
(Cellular/PCS/GPS/SDARS)



Combined Shark Fin Antenna
(Hex Band)
(AM/FM/Cellular/PCS/GPS/SDARS)

Feature

- The stylish form which improved design characteristics
- Support same color as vehicle body to improve design of the vehicle
- To reduce trouble of pole disassembly in a car wash or a three-dimensional parking lot
- To support with the media of each forwarding in a housing of ALL IN ONE

Specifications

Item	AM/FM(JAPAN)		AM/FM(US)		Cellular		GPS	SDARS	On-vehicle TV Antenna (Digital Terrestrial Wave)
	AM	FM	AM	FM	Cellular	PCS			
Frequency	522~1629kHz	76~90MHz	531~1602kHz	87.5~108MHz	824~896MHz	1850~1990MHz	1575.42±1.023MHz	2332.5~2345MHz	470~770MHz
Polarization	—	vertical	—	vertical	vertical	vertical	RHCP	Satellite:LHCP terrestrial:Vertical	Horizontal
Passive Gain	—	—	—	—	-2.5dBic Min.@0deg Average		0dBic Min. @90deg	Satellite: 0.5dBic Min. @20deg Average 1.0dBic Min. @25deg Average 2.0dBic Min. @30-60deg Average Terrestrial: -2.0dBic Min. @0deg Average	—
Gain	50dBμV/m Min.	-20dBμV/m Min.	50dBμV/m Min.	-20dBμV/m Min.	—	—	—	—	-10dBd Min.
LNA Gain	—	—	—	—	—	—	28±5dB	—	—
Output Impedance	—	75Ω	—	75Ω	50Ω	50Ω	50Ω	50Ω	75Ω
Output VSWR	—	2 or less	—	2 or less	2.5 or less	2.5 or less	2 or less	1.5 or less	3 or less
Supply Voltage	10.5~16.0V		10.5~16.0V		—	—	4.0~5.0V	4.4~5.4V	7.5~8.5V