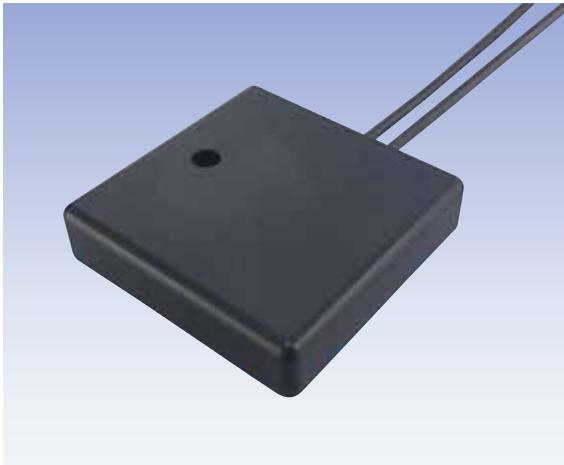


Telematics Antenna



Telematics GPS / Worldwide cellular band combined antenna

Features

- Receiving worldwide telephone signals
- Stolen vehicle tracking system application
- E-call system application
- High sensitivity with Low profile mechanical design

Specification

1.GPS ANT

Item	Condition	Specification
Frequency		1575.42±1.023MHz
Polarized radiation		R.H.C.P
Antenna gain	Elevation 90°	Greater or equal to 0dBic
Axial ratio	Elevation 90°	Less or equal to 6dB

2.TEL ANT

Item	Condition	Specification
Frequency range	GSM850	Tx.Freq.···824~849MHz Rx.Freq.···869~894MHz
	GSM900	Tx.Freq.···824~849MHz Rz.Freq.···869~894MHz
	DCS	Tx.Freq.···1710~1785MHz Rz.Freq.···1805~1880MHz
	PCS	Tx.Freq.···1850~1910MHz Rz.Freq.···1930~1990MHz
Polarized radiation		Vertical polarization
VSWR	Within using frequency band / 0.3m harness edge	Less equal to 4.0
Antenna gain	Average gain figure within used frequency band / Elevation 0° / 0.3m harness edge	Greater or equal to -4.0dBi
	Worst gain figure within used frequency band / Elevation 0° / 0.3m harness edge	Greater or equal to -7.5dBi