

Value Creation – Our Track Record

Yokowo started with precision metal pipe processing developed by its founder, Chutaro Yokoo, at the time when he was a craftsman in the industry. From these beginnings, Yokowo introduced various new technologies centered on micro precision processing, expanding the business to a wide range of fields.

With Tomioka Town within Kanra District, Gunma Prefecture (now Tomioka City), where the founder was born and raised, as the center of development and production, Yokowo is developing and providing cutting-edge products for the global market while expanding its bases overseas.

1920

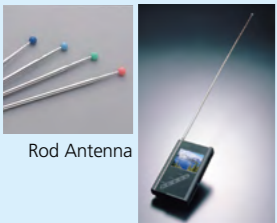
- '22 • Founded YOKOWO MFG. CO., LTD. in Sumida, Tokyo.
- Around 1930 Developed a Spring Bar for watches that, at that time, captured the largest share of the global market.



Spring Bar

1950

- '51 • Incorporated.
- '56 • Started Rod Antenna business. (withdrew in 2003)



Rod Antenna

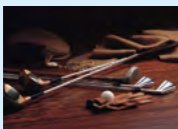
- '57 • Started Vehicle Communication Equipment business.



Pillar Antenna

AM/FM Motor Antenna

- '59 • Started Sporting Goods business. (withdrew in 1995)



Golf Goods

1960

- '61 • Established Tomioka plant in Kanohara, Tomioka.



Tomioka Plant

- '62 • Listed on the second section of the Tokyo Stock Exchange.

- '67 • Established YOKOWO MFG. CO., (TAIWAN) Ltd. (now YOKOWO MICRO TECH CO., LTD.)

1970

- '73 • Established YOKOWO (HONG KONG) LTD.

- '78 • Established YOKOWO (SINGAPORE) PTE. LTD.

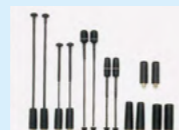
- '79 • Started Circuit Testing Connector business.



Contact Probe

1980

- '83 • Started Personal Communication Antenna business. (withdrew in 2014)



Cellular Phone Antenna



Personal Communication Antenna

- Started Microwave Component business. (transferred to the Vehicle Communication Equipment business in 2002)



Microwave Components

- '84 • Established YOKOWO AMERICA CORPORATION in Chicago, U.S.A.

- '86 • Started Fine Connector business.



SPRING CONNECTOR™

- '87 • Established YOKOWO ELECTRONICS (M) SDN. BHD. in Malaysia.



- Began OEM supply of various satellite broadcast reception devices in tandem with NHK's launch of satellite broadcast services.



Outdoor Unit for BS

- '89 • Completed new head office in Tokyo.



1990

- '90 • Changed company name to YOKOWO CO., LTD.

- '92 • Developed a small-sized ceramic patch GPS Antenna.



GPS Antenna

- '94 • Established DONGGUAN YOKOWO ELECTRONICS CO., LTD. in China. (merged with DONGGUAN YOKOWO CAR COMPONENTS CO., LTD. in 2017)



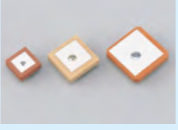
- '95 • Established DONGGUAN YOKOWO CAR COMPONENTS CO., LTD. in China.

- '96 • Developed the world's first Micro Antenna for automotive AM/FM radio.



Micro Antenna

- Started Microwave Ceramics business.



Ceramic Antenna

- '97 • Developed a BGA Test Socket to make a full entry into the semiconductor inspection market.



BGA Test Socket

- '99 • Established DONGGUAN YOKOWO COMMUNICATION COMPONENTS CO., LTD. in China.

- Established YOKOWO Europe Ltd. in London, U.K.

- '99 • Established YOKOWO MEMS development center.

2000

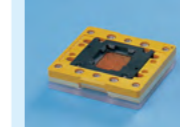
- '01 • Listed on the first section of the Tokyo Stock Exchange.

- '02 • Established YOKOWO MANUFACTURING OF AMERICA LLC in Hilliard, Ohio, U.S.A.



- Established YOKOWO KOREA CO., LTD. in Korea.

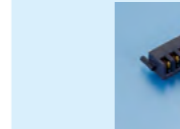
- Developed the industry's first socket for high-frequency testing.



Hi-Giga Sockets

- '05 • Established YOKOWO CORP. (H.K.) LTD. in Hong Kong.

- Developed a 2 Piece connector to make a full entry into the rugged handheld device market.



2-Piece Blade Connector

- '06 • Started Medical Device business.



Components for Medical Devices (Tip Terminal of Catheter)

- '07 • Established YOKOWO Advanced Device Center. (reorganized into a joint corporation in 2019)



YOKOWO Advanced Device Center

- '08 • Took over probe card business from Genesis Technology Inc.

- Established YOKOWO MEMS development center.

2010

- '11 • Established YOKOWO VIETNAM CO., LTD. in Vietnam.



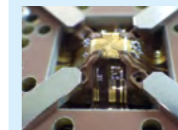
- Began OEM supply of Guide Wire for medical treatment.



Guide Wire for Medical Treatment

- '12 • Acquired ISO 13485 certificate.

- '13 • Commercialized the YPX probe card series for the testing of high frequency devices using MEMS technology.



YPX Series

- '14 • Acquired ISO 27001 certificate.

- '16 • Acquired OHSAS 18001 certificate. (Transferred to ISO 45001 in 2020)

- '18 • Established Advanced Measurement Technology Center in Tomioka plant.



AMT Center

- '19 • Registered the SmartWeld® trademark for its original technology for bonding different metallic materials.

- Established a joint corporation as LTCC Materials Co., Ltd.

2020

- '20 • Established YOKOWO EUROPE GmbH in Germany.

- Established Lumax Yokowo Technologies Private Limited in India.

- Established YOKOWO MANUFACTURING OF THE PHILIPPINES, INC. in Philippines.



- '21 • Headquarters relocated to JR Kanda Manseibashi Building.



- '22 • Transitioned to the prime market of Tokyo Stock Exchange, in accordance with the restructuring of market segments.

- Established YOKOWO FUTURE-ORIENTED SUPPORT CO., LTD.

- Installed a photovoltaic power generation system at Vietnam Plant.

- Established YOKOWO ELECTRONICS VIETNAM CO., LTD. in Vietnam.



- '23 • Established the Micro Process R&D Center (MP Center) in the Tomioka Plant.